



专业 专注 创新 极致
Professional Concentrated Innovative Extreme



服务热线 400 116 2006
www.likechuan.com

青岛力克川

地址：青岛高新技术产业开发区思源路36号

电话：+86-532-55676157

邮箱：lkc2006@likechuan.com

LKC Qingdao

ADD:No.36,Siyuan Road,Qingdao High-tech Industrial Development Zone,China

TEL:+86-532-55676157

E-mail:lkc@lkc2006.com

本公司保留产品更改权，如有变动，恕不另行通知

We reserve the right to change our products without prior notice.

创世界液压一流品牌

青岛力克川液压股份有限公司
Qingdao LKC Hydraulic Co., Ltd.

Contents

目录

- 企业简介 < 01 > Company Profile
- 发展历程 < 02 > LKC Development Process
- 企业荣誉 < 04 > Enterprise Honor
- 研发实力 < 06 > R & D Strength
- 力克川学院 < 08 > LKC College
- 制造与测试 < 09 > Manufacturing and Testing
- 应用领域 < 10 > Applications
- 产品介绍 < 12 > Product Introduction



Profile Company 企业简介 >>

青岛力克川液压股份有限公司2006年成立于青岛高新技术产业开发区，主要从事工程机械、农业机械、隧道工程、海洋工程、能源装备等行业的液压驱动装置的研发、制造、销售与服务。已形成大、中、小、微系列化发展格局，是液压驱动装置专业制造商。

Qingdao LKC Hydraulic Co., Ltd. was established in Qingdao High tech Industrial Development Zone in 2006. It is mainly engaged in R&D, manufacturing, sales, and service of hydraulic drive devices in industries such as construction machinery, agricultural machinery, tunnel engineering, energy equipment and marine engineering. With an annual production capacity of 200,000 units, it has formed a large, medium, small and micro series development pattern,. It is a professional manufacturer of hydraulic drive devices.

Culture Corporate 企业文化 >>

力克川愿景：创世界液压一流品牌
力克川使命：专业、专注、创新、极致
力克川宗旨：用心铸造精品，用爱培育人品
力克川幸福观：守孝道、重德行、超优秀、创价值
力克川行动作风：认真、快、坚守承诺、保证完成任务、绝不找借口

LKC Vision: to Create a World-class Hydraulic Brand
LKC Mission: Professional, Dedicated, Innovative, Extreme
LKC Purpose: Casting fine products with heart, cultivating human character with love
LKC Concept of Happiness: Observing filial piety, Minding behaviors, Exceeding excellence, Creating value
LKC Action Style: Do seriously and quickly . Stick to the promise. Guarantee completion of tasks. Never make excuses

成立研发 2006-2010

Establish research and development

2006

青岛力克川液压机械有限公司成立。
Qingdao LKCHydraulic Machinery Co., Ltd. founded.



10月，聘请国内液压专家启动大型施工机械液压件制造项目。
In October, Hire domestic hydraulic experts to establish R&D center for hydraulic part development project.



2007-2009

LTM18行走装置、LSM30回转装置、LK3V63柱塞泵等产品相继研制成功。
The first LTM18 traveling device, LSM30 swing device and LK3V63 piston pump were successfully developed.



2010

11月，携行走装置、回转装置、变量柱塞泵等产品参加上海国际工程机械宝马展。
In November, participated in the Shanghai Engineering Machinery Bauma Exhibition with products such as travel device, swing device and variable piston pumps.



行业聚焦 2011-2015

Industry Focus

2012

6月，召开战略会议，确立二五战略规划，聚焦于0.8-36T履带驱动装置专业制造商。

In June, a strategic meeting was held to establish the two Five-Year Strategic Plan, focusing on the professional manufacturer of 0.8-36T track drive devices.



2013

荣获工程机械高端液压件协同平台成员单位。
Won the title of member unit of the collaborative platform for high-end hydraulic parts for construction machinery.



LTM09、LTM18、LTM22等行走装置首次走出国门。
In January, LTM09, LTM18 and LTM22 were exported for the first time.

2014

TM02、TM04、TM60行走装置相继研制成功。
TM02, TM04 and TM60 travel devices were successfully developed.



2015

12月，1号车间升级改造为智能化车间，年产能3万台。
In December, Workshop No. 1 was upgraded to an intelligent workshop with an annual production capacity of 30,000 units.

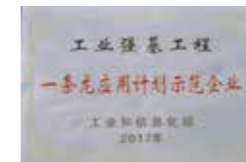


市场拓展 2016-2020

Expanding the market

2017

12月，荣获国家工信部工业强基“一条龙”应用计划示范企业。
In December, won the title of Demonstration Enterprise of One Package Application Plan by the Ministry of Industry and Information Technology.



2018

4月，董事长王金铂带领团队考察欧洲市场。
In April, Chairman Wang Jinbo visited the Europe market.



11月，“山东省装备制造业协会液压行业分会”发起成立，董事长王金铂担任会长。
In November, the "Hydraulic Industry Branch of Shandong Equipment Manufacturing Association" was established, with Chairman Wang Jinbo as president.



2019

参加俄罗斯工程机械宝马展、中国东盟博览会印尼展、印度国际建筑工程机械展。
Participated in the Russia CTT Bauma Exhibition, the China-ASEAN Expo Indonesia Exhibition, and the India EXCON International Construction Machinery Exhibition.



列入工信部首台（套）重大技术装备保险补偿项目。
Included in the Ministry of Industry and Information Technology's first major technical equipment insurance compensation project.



6月，获评山东省高端装备制造业领军（培育）企业。
In June, it was rated as a leading (cultivated) enterprise in Shandong Province's high-end equipment manufacturing industry.



快速发展 2021-2024

rapid growth

2021

7月，荣获国家级专精特新“小巨人”企业。
In July, Won the title of Specialized and New "Little Giant" Enterprise of National Industry and Information Technology Department.



2022

10月，荣获国家知识产权优势企业。
In October, it was awarded the title of National Intellectual Property Advantage Enterprise.



2023

高端智能液压泵、液压阀、液压马达制造项目投产，年产能达20万台。
The high-end intelligent hydraulic pump, hydraulic valve and hydraulic motor manufacturing project put into production, with an annual production capacity of 200,000 units.



8月，获评“山东省企业技术中心”。

In August, it was awarded the title of "Enterprise Technology Center of Shandong Province".



11月，获评“山东省制造业单项冠军”。

In November, it was named "Single Champion of Manufacturing Industry in Shandong Province".



2024

4月，公司完成股份制改造。
In April, the company completed the transformation into a joint-stock company.

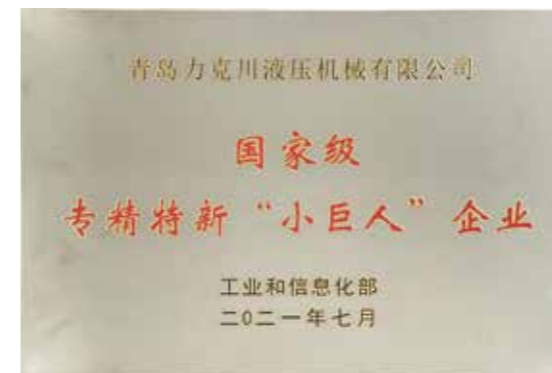




honor
Enterprise 企业荣誉 >>

公司先后荣获“国家工业强基工程重点产品、工艺‘一条龙’应用计划示范企业”、“国家工信部工程机械高端液压件及液压系统产业化协同工作平台成员单位”、获评国家工信部重点专精特新“小巨人”、“国家知识产权优势企业”、“国家高新技术企业”、“全球工程机械产业大会零部件产品应用50强”、“中国工程机械零部件100强”、“企业信用评价AAA级信用企业”等荣誉，列入“全国机械用户满意产品名录”，获评山东省“瞪羚”企业、山东省首台（套）技术装备及关键核心零部件项目、“山东省高端品牌培育企业”、“山东省高端装备领军企业”、山东省科技“小巨人”等荣誉，被评为“山东省创新潜力100强企业”、青岛市“隐形冠军”企业，入选“青岛市高科技高成长20强”、“青岛市创新潜力10强”。

The company has successively won the titles of “Key Products of National Consolidation of Industrial Foundation Program, Demonstration Enterprise of One Package Application Plan”, “Member Unit of National Ministry of Industry and Information Technology Construction Machinery High-end Hydraulic Parts and Hydraulic System Industrialization Collaborative Work Platform”, Specialized and New “Little Giant” Enterprise of National Industry and Information Technology Department, National Intellectual Property Advantage Enterprise, National High-tech Enterprise, etc. The company was listed in the “National Machinery Customer Satisfaction Products List” and was appraised as the “Gazelle Enterprise” in Shandong Province, the first (set) technical equipment and key core parts project, the high-end brand cultivation enterprise in Shandong Province, the high end equipment leading enterprise, the “Invisible Champion” enterprise in Qingdao. The company was also selected as “The top 20 high-tech high growth enterprises in Qingdao” and “The top 10 innovation potential enterprises in Qingdao”.



strength
R & D 研发实力>>

- 山东省企业技术中心
- 青岛市工程研究中心
- 青岛市技术创新中心
- 青岛市“一企一技术”研发中心
- 青岛市工业设计中心
- 青岛市专家工作站



拥有专业技术研发人员40余人，聘请国家航空部液压专家为总工程师，分别与浙江大学、兰州理工大学、燕山大学、德国亚琛大学等国内外知名院校建立产学研合作关系，成功研发23大系列323款产品，申请国家专利125项，其中液压马达超载负载自动复位处于国内领先、国际先进水平。

LKC has more than 40 professional and technical R & D personnel, employed hydraulic experts from the Ministry of space technology as the chief engineer, and established industry-university-research cooperation relations with well-know universities at home and abroad, such as Zhejiang University, Lanzhou University of technology, Yanshan University, German Aachen University, etc. LKC has successfully developed 323 products in 23 series and applied for 125 national patents. The automatic reset technology for hydraulic motor overload is at the international advanced and domestic leading level.

Services
Marketing and 市场营销>>

自公司成立以来，力克川液压坚持以“让客户满意是我们不懈的追求”的服务宗旨，以产品在出厂前实现“保质、保供、保量”的交付原则，已成功配套服务于国内百余家知名主机厂，积极“走出去”与国际市场接轨，产品远销亚洲、欧洲、美洲等十余个国家和地区。力克川液压驱动装置产销量国内行业领先。

Since its establishment, LKC Hydraulic has adhered to the service tenet of "Customer satisfaction is our unremitting pursuit" and the delivery principle of "quality, supply and quantity" before leaving the factory. It has successfully provided supporting services to more than 100 well-known domestic OEMs, actively "going out" to connect with the international market, and its products are exported to more than ten countries and regions in Asia, Europe, America, etc. LKC hydraulic drive devices leads the domestic industry in production and sales.

Social responsibility 社会责任>>

力克川液压弘扬“用心铸造精品，用爱培育人品”的办企理念，以培养液压技术专业人才为己任，承担起社会责任。公司建有“力克川学院”、“力克川书画院”、设立“员工幸福基金”，现为“山东省装备制造业协会液压行业分会会长单位”、“青岛禹城商会会长单位”、“青岛市城阳区慈善总会会员单位”、“青岛市红岛经济区书法家协会理事单位”。

LKC Hydraulic promotes the enterprise concept of "casting high-quality products with heart and cultivating character with love", takes the cultivation of hydraulic technology professionals as its own responsibility, and undertakes social responsibilities. The company has established "LKC College", "LKC Calligraphy Academy" and "Employee Relief Fund". Now it is "President Unit of Shandong Provincial Equipment Manufacturing Association Hydraulic industry Branch", "Director Unit of Qingdao Hongdao Economic Zone Calligrapher Association".

Planning
Strategic 战略规划>>

► **第一阶段 The First Stage:**

以工程机械市场为主导应用领域，自主研发多元化液压产品。
Taking the construction machinery market as the leading application field, independently research and develop diversified hydraulic products.

► **第二阶段 The Second Stage:**

聚焦工程机械、农业机械、隧道工程、能源装备及海洋工程等行业，专注研发行走和回转装置。
Focusing on construction machinery, agricultural machinery, tunnel engineering, energy equipment, and marine engineering, Concentrating on the R&D of travel devices and swing devices in various industries.

► **第三阶段 The Third Stage:**

协同国内外专业液压件制造商与主机企业，结成战略联盟，发展成为液压系统集成制造商与服务商。
Cooperate with domestic and foreign professional hydraulic part manufacturers and OEMs to form a strategic alliance and develop into a hydraulic system integration manufacturer and service provider.



力克川学院2014年9月28日成立，致力于积极推动公司发展战略的顺利实施，是公司变革的推动者和公司文化的宣传者。既是公司内部人才培养的“黄埔军校”，也是高端液压技术培训基地。

LKC College was established on September 28, 2014. It is committed to actively promoting the smooth implementation of the company's development strategy and it's also the promoter of corporate change and the propagandist of corporate culture. It is not only the "Whampoa Military Academy" for internal personal training, but also the high-hydraulic technology training base.



学院愿景 Vision:

培育高端优秀液压人才
Cultivate high-end outstanding hydraulic talents.

学院使命 Mission:

打造高端液压培训“一站式”智力平台
Create a "one-stop" intellectual platform for high-end hydraulic training.

学院价值观 Teaching mode:

诚信、奉献、创新、卓越、极致。
Integrity, Dedication, Innovation, Excellence, Ultimate.

and testing
Manufacturing 制造与测试>>



公司通过ISO9001国际质量管理体系认证、欧盟CE认证，拥有国际先进的FMS柔性加工生产线、桁架式自动加工线、自动化流水装配线、自动化智能喷涂线，中央检测室配备了蔡司三坐标检测仪，日本粗糙测量仪、轮廓仪、高精度气动测量仪、硬度计、齿轮测量仪等30余台套先进检测设备。公司FMS柔性加工生产线2018年获青岛市“555”自动化流水线项目荣誉称号。

LKC has passed the ISO9001 international quality management system certification, EU CE certification and owns international advanced FMS flexible processing production line, truss automatic processing line, automatic assembly line and Automatic intelligent painting line. The central testing laboratory is equipped with more than 30 sets of advanced testing equipment, such as Zeiss CMM, Japanese roughness measuring instrument, profiler, high-precision pneumatic instrument, hardness tester and gear measuring instrument. The company's FMS flexible processing production line won the honorary title of Qingdao "555" automated assembly line project in 2018.



APPLICATIONS

应用领域 >



产品概览

Product Overview

行走系列

Travel Motor Series



行走马达
Travel motor



闭式系统行走马达
Close loop travel motor



数字系列马达
Digital travel motor



LK系列马达
LK series motor

回转系列

Swing Motor Series



微型系列回转马达
Micro series swing motor



小型系列回转马达
Small series swing motor



中型系列回转马达
Medium series swing motor

液压泵系列

Hydraulic pump series



LP开式系统液压泵
LP Open loop hydraulic pump



LD开式系统液压泵
LD Open loop hydraulic pump



LA开式系统液压泵
LA Open loop hydraulic pump



闭式系统液压泵
Close loop hydraulic pump

桥箱系列

Axle Gearbox Series



工程车辆变速箱
Construction Vehicle Gearbox



工程车辆变速箱
Construction Vehicle Gearbox



工程车辆车桥
Construction Vehicle Axle

铸件系列

Casting Series



壳体系列
Body Case Series



阀体系列
Valve Body Series



齿圈系列
Ring Gear Series



主泵外壳
Main Pump Housing



变速箱外壳
Transmission Housing

行走装置系列 Travel Motor Series

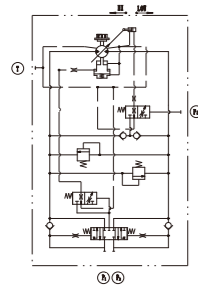
产品介绍 Product introduction

本产品为马达与减速机一体的行走装置。由双排量轴向柱塞马达、行星减速器组成。马达内置平衡阀、停车制动装置及高低档转换装置。特点：传动比大、结构紧凑、效率高、可靠性强、体积小、运行平稳、噪音低等。

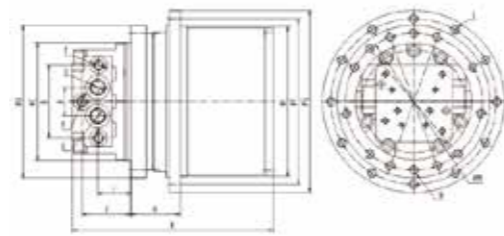
Travel motor: This product is a traveling device integrated with motor and reducer. It consists of a double displacement axial piston motor and a planetary reducer. There is a built-in counter-balance valve, parking brake device and high and low shift device in the motor. Features: large transmission ratio, compact structure, high efficiency, high reliability, small size, stable operation and low noise.



液压回路图 Hydraulic Circuit Diagram



外形尺寸图 Dimensions



技术和尺寸参数 Specifications

型号 Model	LTM02	LTM03	LTM03A	LTM04	LTM05	LTM06	LTM07	LTM09	LTM10	LTM18	LTM22	LTM30	LTM40	LTM60
最大输出扭矩 (N.m) Max Output Torque	1500	2100	2900	4200	5000	6300	10500	11500	13700	16900	22000	30000	46000	60000
最高工作压力 (Mpa) Max Working Pressure	24.5	24.5	24.5	24.5	27.5	27.5	31.5	31.5	27.5	31.5	31.5	27.5	34.5	34.5
最高输出转速 (r/min) Max Output Speed	75	70	50	55	55	55	50	50	50	60	55	30	50	50
适用吨位 (T) Applicable Tonnage	~1.8	~2.5	~3.5	~4	~4.5	~6	~7	~9	~10	~12	~15	~18	~25	~30
A	33	33	40	40	40	40	50	50	50	50	50	50	108	108
B	86	86	102	102	102	102	106	106	106	116	116	116	/	/
C	140	150	165	165	180	180(200)	210	210	210	246	246	246	300	300
D	175	190	215	215	246	246(266)	268	280	280	308	308	308	370	484
E	140	160	190	210	230	230	250	265	265	324	324	324	402	450
F	155	180	215	232	262	262	282	300	300	364	364	364	440	492
G	175	200	238	255	288	288	306	326	326	394	394	394	470	530
H	45	40	50	70	68	75(68)	68	80	80	100	100	100	98	102
I	43	58	48	48	48	48	78	78	78	87	87	87	130	94
J	58	74	68	68	63	88(63)	109.5	149	149	118	118	118	132	96
K	200	227	252	280	340	340	356	362	362	414	414	488	548	554
L	9- M10	12- M10	11(9)- MB	12- M12	12- M14	12- M14	12- M14	12- M14	12- M14	15- M16	15- M16	15- M16	30- M16	18- M24
M	155	170	192	192	220	220(240)	244	250	250	280	280	280	340	440
N	8- M10	12- M10	11- M10	13(9)- M10	9- M14	9- M14	12- M14	12- M16	12- M16	20- M16	20- M16	20- M16	30- M16	26- M20
O	G3/8	G3/8	G1/2	G1/2	G1/2	G1/2	G1/2	G1/2	G1/2	G1/2	G1/2	G1/2	G1	G1
P	G1/8	G1/8	G1/4	G1/4	G1/4	G1/4	G1/4	G1/4	G1/4	G1/4	G1/4	G1/4	G1/4	G1/4
T	G1/4	G1/4	G1/4	G1/4	G1/4	G1/4	G3/8	G3/8	G3/8	G1/2	G1/2	G1/2	G1/2	G1/2

回转装置系列 Travel Motor Series

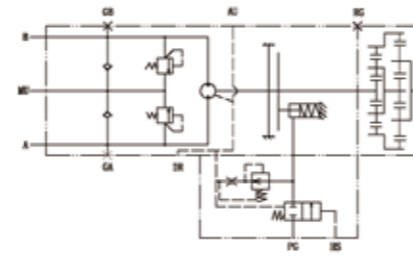
产品介绍 Product introduction

本产品为斜盘式直轴液压马达驱动的回转装置。马达内部装有补油阀、回转制动器、溢流阀等辅件，保证了回转装置运转平稳，安全可靠。特点：结构简单、体积小、噪音低。

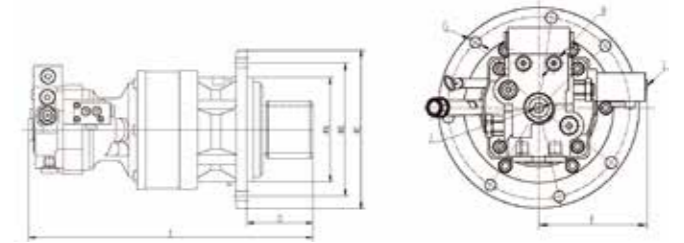
Swing motor: This product is a swing device driven by a swash plate type straight axis hydraulic motor. there are built-in accessories like oil filling valve, rotary brake and relief valve to ensure stable and safe operation of the swing device. Features: simple structure, small size and low noise.



液压回路图 Hydraulic Circuit Diagram



外形尺寸图 Dimensions



技术和尺寸参数 Specifications

型号 Model	LSMN-10-10	LSMN-16-21	LSMN-24-21	LSMN-34-23	LSMN-30-19	LSMN-46-19	LSMN-63-19	LSMN-73-19	LSMN-130-20	LSMN-180-22	LSMN-250-25
最大输出扭矩 (N.m) Max Output Torque	627	1000	1399	2434	2320	3320	5760	6570	13400	18640	31000
最高工作压力 (Mpa) Max Working Pressure	21.6	21.6	21.6	21.6	25	25	29.4	29.4	32.4	32.4	32.4
最高输出转速 (r/min) Max Output Speed	60	90	100	60	102	102	115	115	92	84	60
适用吨位 (T) Applicable Tonnage	~2.5	~3.5	~5	~6	6~8	6~8	~15	~15	~20	~25	~36
A	φ193	φ242	φ248	φ1280	200	200	200	200	310	345	/
B	φ168	φ210	φ220	φ250	275	275	290	290	360	400	520
C	φ110	φ150	φ175	φ190	311	311	323	323	410	450	575
D	264	283	323	368	98.5	98.5	113	113	162	179	220
E	67	96	94	105	502	502	487	487	567	649	1030
F	178	168	208	243	160	160	124.5	124.5	118	131	200
G	4- φ13	6- φ17	10- φ17	8- φ17	7-φ18 (φ18)	7-φ18 (φ18)	9-φ18+ 1-φ20	9-φ18+ 1-φ20	11-φ22+ 1-φ24	13-φ22+ 1-φ24	20- φ25
H	1/4	1/4	1/4	1/4	1/4	1/4	1/4	1/4	1/4	1/4	1/4
J	G3/8	G3/8	G3/8	G1/2	G3/4"	G3/4"	G3/4	G3/4	G3/4	G1	G1-1/4
L	2- G1/4	2- G1/4	2- G1/4	2- G1/4	G1/4"	G1/4"	G1/4"	G1/4"	G1/4"	G1/4"	G1/4"

详细尺寸参数以我司技术图纸为准。
Detailed dimension parameters shall be subject to our technical drawings.